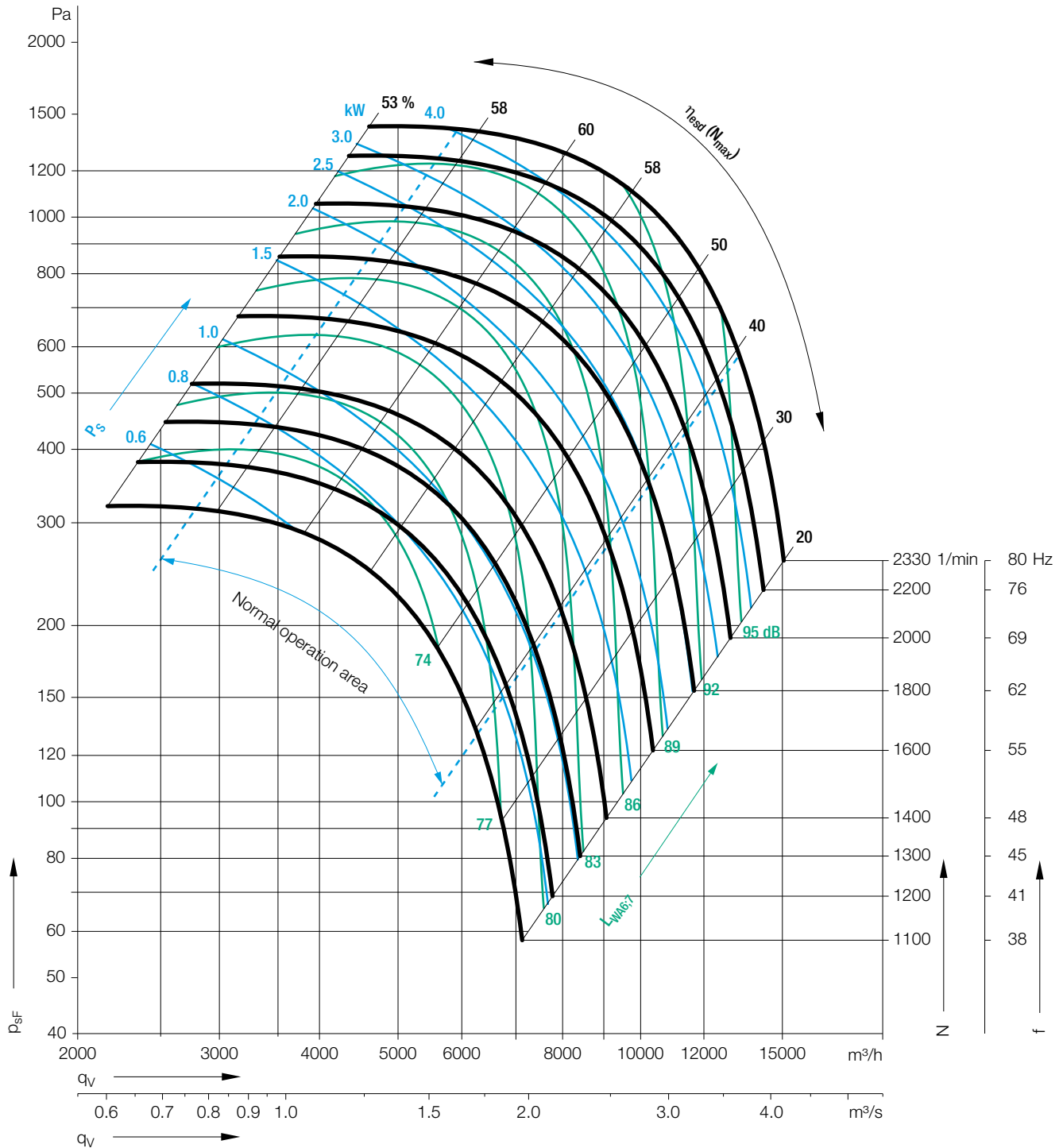


RZA 11-0400

Technical Data

Density of media **1.15 kg/m³**.
 Tolerance class **2** according to **DIN 24166**.
 Measured in installation **A** according to **ISO 5901** (unducted).



Determination of the Octave level

Inlet side

Relative sound power level L_{Wrel17} at octave band correction factors f_c .

| Duty point | 63 | 125 | 250 | 500 | 1000 | 2000 | 4000 | 8000 Hz |
|---------------------|-----|-----|-----|-----|------|------|------|---------|
| $\leq 1.4 q_{Vopt}$ | -9 | -2 | -3 | 0 | -7 | -9 | -15 | -25 dB |
| $> 1.4 q_{Vopt}$ | -12 | -6 | -6 | 0 | -7 | -7 | -13 | -25 dB |

Discharge side

Relative sound power level L_{Wrel16} at octave band correction factors f_c .

| Duty point | 63 | 125 | 250 | 500 | 1000 | 2000 | 4000 | 8000 Hz |
|---------------------|----|-----|-----|-----|------|------|------|---------|
| $\leq 1.4 q_{Vopt}$ | -5 | -7 | -5 | -1 | -6 | -9 | -16 | -26 dB |
| $> 1.4 q_{Vopt}$ | -7 | -11 | -8 | -1 | -6 | -8 | -13 | -26 dB |